



## PlantSelector Help

Use PlantSelector to get detailed information and photos of plants by:

- Searching for plants that will grow well at your planting site.  
[How do I do this?](#)  
OR
  - Searching for plants with specific characteristics.  
[How do I do this?](#)  
OR
  - Searching for plants with specific characteristics AND that will grow well at your planting site.  
[How do I do this?](#)  
OR
  - Locating a plant quickly if you know all or part of the plant's name.  
[How do I do this?](#)
1. [How do I limit my search to Trees & Shrubs only or Flowers & Ferns only or Grasses and Sedges only?](#)
  2. [How do I get detailed information about a plant I've selected?](#)
  3. [How do I print or save a list of plants?](#)
  4. [How do I download or print photos?](#)
  5. [How do I navigate in PlantSelector?](#)



[Go to Top](#)

## How to Perform a Site Based Plant Search

Example:

The planting site is along a roadway that is excessively wet causing drainage issues. The soil texture is clay loam. The soil salt content is high. The site receives full sunlight. Return all plant species that can grow in these conditions.

*Note:*

*By default, all plant categories will be searched. Plant categories are Trees & Shrubs, Grasses & Sedges and Flowers & Ferns. Therefore, by default, plant species for all categories that meet specified criteria will be returned by a search.*

*If you only want plant species in a specific category, uncheck the categories not required. This can be done on any of the characteristic pages.*

Search results will include:

Trees and Shrubs

Grasses and Sedges

Flowers and Ferns

### Steps:

1. From the Home Page click on the “Planting Site Characteristics” link.
2. If already beyond the Home Page, click on the “Planting Site Characteristics” tab in the navigation bar.
3. Check the plant categories within which you want to search under the heading “Search results will include:”
4. Click on “Daily SunLight”. When the criteria selection window opens, click on “Full Sun”. Click OK.
5. Click on “Drainage”. When the criteria selection window opens, click on “Wet” under Moisture Regime and “Excessive” under Drainage. Click OK.
6. Click on “Soil Salt Content”. Click on “High”. Click OK.
7. Click on “Soil Texture”. Click on “Clay Loam”. Click OK.
8. Notice that all of the criteria selected and the number of plant species that match the criteria have been listed in the right pane.
9. You should have 32 matches returned.
10. Click on the “Search” button in the right pane to receive a list of the plants.
11. Click on the “Datasheet” of a plant to obtain detailed information and photos.
12. This information can be viewed, printed or saved in PDF format by clicking Download PDF Datasheet.



[Go to Top](#)

## How to Perform a Plant Based Search

Example:

You want to perform a search for flowers and for deciduous trees. The criteria for deciduous trees are a minimum height of 25 feet, a maximum height of 45 feet, and a tree form of upright. You also want to find all red, pink or purple flowers that bloom in May or June.

*Note:*

*By default all of the plant categories are checked on. Plant categories are Trees & Shrubs, Grasses & Sedges and Flowers & Ferns. Therefore, plant species for all categories that meet specified criteria will be returned when a search is activated.*

*If you only want plant species returned from a specific category uncheck the categories not required.*

Search results will include:

Trees and Shrubs

Grasses and Sedges

Flowers and Ferns

### Steps:

1. From the Home Page click on the “Tree and Shrub Characteristics” link.
2. If already beyond the Home Page, click on “Tree and Shrub Characteristics” tab in the navigation bar.
3. Uncheck the Grasses and Sedges checkbox in the heading box labeled “Search results will include:”
4. Click on “Deciduous/Evergreens”, Click on “Deciduous Tree”. Click OK.
5. Click on “Plant Height”. Enter 25 for minimum height in feet; enter 45 for maximum height in feet. Click OK.
6. Click on “Tree Form”, click on “Upright”. Click OK.
7. Click on “Flowers and Ferns Characteristics” tab in the navigation bar.
8. Click on “Flower Colors”, click on red, pink, and purple. Click OK.
9. Click on “Flower Months”, click on May and June. Click OK.
10. You should have 78 matches returned.
11. Notice all of the criteria selected and the number of plant species that match the criteria have been listed in the right pane.
12. Click on the “Search” button in the right pane to receive a list of the plants.
13. Click on the “Datasheet” of the plant to obtain detailed information and photos.
14. This information can be viewed, printed or saved in PDF format by clicking Download PDF Datasheet.



[Go to Top](#)

## How to Perform a Combination of Site and Plant Based Searches

You may want to perform a single search defining both your site characteristics and specific plant characteristics. This can be done by first defining the site characteristics as described in “How do I perform a site based search”; then defining the specific plant characteristics as described in “How do I perform a plant based search”; then submitting a single search.

*Note:*

*By default all of the plant categories are checked on. Plant categories are Trees & Shrubs, Grasses & Sedges and Flowers & Ferns. Therefore, plant species for all categories that meet specified criteria will be returned when a search is activated.*

*If you only want plant species returned from a specific category uncheck the categories not required.*

Search results will include:

Trees and Shrubs

Grasses and Sedges

Flowers and Ferns



[Go to Top](#)

## Searching for Plants by Name

There are two ways to search for plants by name. One is using the Plant Index; the other is using the Search by Plant Name feature.

### How to Search using the Plant Index

The Plant Index is an alphabetized list of all plant species. The index can be sorted either by common name or scientific name.

#### Steps:

1. From the Home Page click on the “Search by Plant Name” link.
2. If already beyond the Home Page, click on “Plant Index” tab.
3. Click on either “List by Common Name” or “List by Scientific Name” depending on the name type you are using.
4. Scroll down the list of names until the desired plant species is located.
5. Click on the plant species name which will be added to the Plants Selected pane to the right.
6. Click on the “Display Selected Plants” button.
7. A list of all the plant species names in the Plants Selected pane will be returned.
8. Mouse over the common name of the plant species to view general attributes of the plant.
9. By clicking on a column heading, you can alphabetize the list by either Common Name or Scientific Name.
10. Click on the plant species’ “Datasheet” to view all attributes or to save or print a Datasheet.



[Go to Top](#)

## How to Search using the “Search by Plant Name” Feature

This method allows you to type in the full or partial name of the plant. This will return the specific plant or all plants that match the partial name entered.

### Steps:

1. From the Home Page click on the “Search by Plant Name” link.
2. If already beyond the Home Page, click on “Search by Plant Name” field in the left pane.
3. Enter a full or a partial plant name and click the “Search” button. The specific plant will be returned or all plants that match the partial name entered.
  - a. For example enter “Maple” and all plants that have the word Maple in it will be returned.
  - b. For example enter “Map” and all plants that have the letters “Map” in it will be returned.
4. A list of plant species will be displayed.
5. Mouse over the plant species’ common name to view general attributes of the plant.
6. By clicking on a column heading, you can alphabetize the list by either Common Name or Scientific Name.
7. Click on the plant species’ “Datasheet” to view all attributes or to save or print a Datasheet.



[Go to Top](#)

## How to get detailed information on a plant

How to locate a Datasheet.

1. Obtain a list of plant species by one of the following methods; a site-based and/or plant-based search, a plant-name search, or using the Plant Index.
2. Click on desired plant species' "Datasheet".
3. Click on Download PDF Datasheet in upper right of the page.

How to print a Datasheet.

1. Obtain a list of plant species by one of the following methods; a site-based and/or plant-based search, a plant-name search, or using the Plant Index.
2. Click on desired plant species' "Datasheet" from the list.
3. Click on Download PDF Datasheet in upper right of the page.
4. Click on the printer icon.

How to save a Datasheet.

1. Obtain a list of plant species by one of the following methods; a site-based and/or plant-based search, a plant-name search, or using the Plant Index.
2. Click on desired plant species' "Datasheet" from the list.
3. Click on Download PDF Datasheet in upper right of the page
4. Click on "Save a Copy of the File" in the tool bar.



[Go to Top](#)

## How to print and save a list of plants

### Steps:

1. Obtain a list of plant species by one of the following methods; a site-based and/or plant-based search, a plant-name search, or using the Plant Index.
2. Click on Print Report found at both the top and bottom of the search page results.
3. The report can be saved as a PDF or printed.

[Go to top](#)

## How to download and save images

### Steps:

1. Click on the “Datasheet” of the plant species.
2. Click on the word below the image. For example “Mature”.
3. Option to “Save” or “Download” image will be presented.

**PlantSelector**  
Making choices for roadside planting

**Creeping Alfalfa (including cultivars)**  
Medicago sativa

[Download PDF Data Sheet](#) Close

[Mature](#) [Flower](#) [Leaf](#)  
Click here to download the image

**Click on word below image.**

General Attributes & Plant Community | Flowers/Foliage/Fruits & Soils | Planting Ease & Maintenance | Pests/Problems & Miscellaneous

General Attributes		Plant Community	
Habit	Upright Multiple Stem	Sun	Full Sun, Partial Sun
Height	6 - 30 Inches	Orientation	North, South, East, West
Spread	6 - 12 Inches	Soil Texture	Sand to Silty Clay
Aquatic	No	Topography	Upland, Lowland (Stable Water)
Growth Rate	Fast	Plant Community	Inland Fresh Meadow, Old Field, Grassland
Life Span	Short-Lived Perennial	Succession	Intermediate
Stand Persistence	Medium	Origin	North America, Non North America
Growing Season	Cool		
USDA Zone	2 - 7A		
Root Pattern	Tap Root		

**Comment:**  
Availability of creeping varieties is limited. Alfalfa is primarily used for forage purposes and goes into dormancy during periods of drought. The inoculant bacteria Rhizobium may be required to confer salt tolerance. Buy plants pre-inoculated with the bacteria or add it prior to planting.

Close

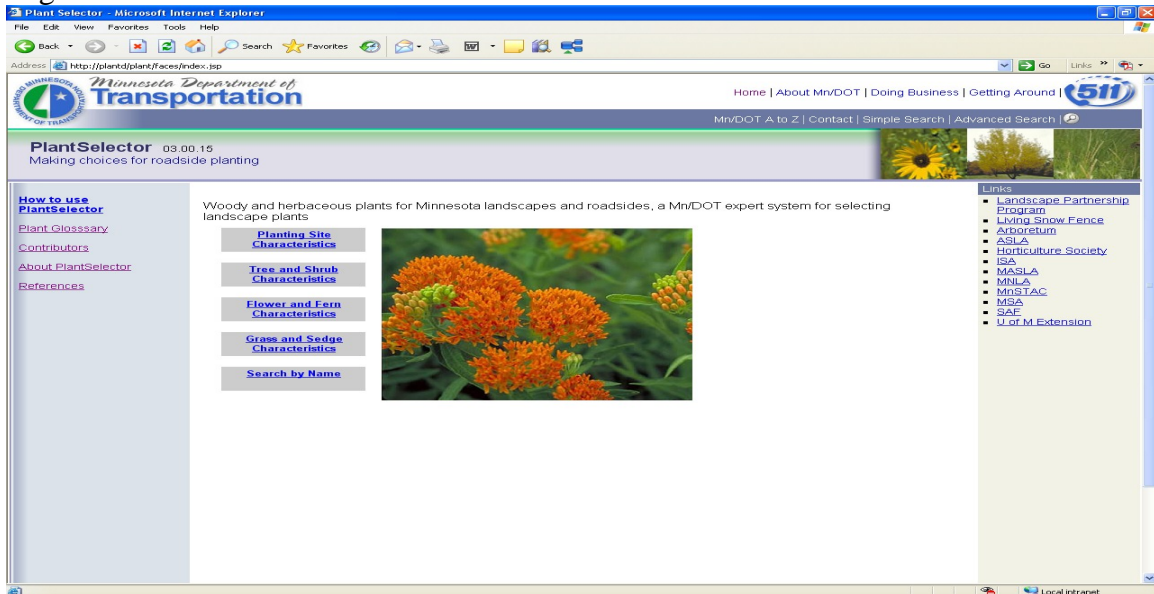
http://plants/plant/servlet/plantImage.do?fileName=medicago\_sativa-mature.jpg&speciesType=150



[Go to Top](#)

## General Navigation Information

**Getting Started:** From the Home Page click on one of the links in the body of the Web Page.



**Inside the Application:** Click on one of the tabs in the following **Navigation Bar**:

[Home](#) | [Plant Index](#) | [Planting Site Characteristics](#) | [Tree and Shrub Characteristics](#) | [Grass and Sedge Characteristics](#) | [Flower and Fern Characteristics](#) | [Contact](#)

Each of the following characteristic tabs has their own unique characteristics that you may use to describe the planting site or the type of plant desired. You may select as many characteristics as you want. Note that selecting too many will limit your plant options.

### Site Characteristics

There are 16 characteristics available to describe your site.

### Trees and Shrubs Characteristics

There are 29 characteristics available to describe the type of trees and shrubs desired.

### Grasses and Sedges Characteristics

There are 22 characteristics available to describe the type of grasses and sedges desired.

### Flowers and Ferns

There are 24 characteristics available to describe the type of flowers and ferns desired.



## Left Pane

<a href="#">How to use PlantSelector</a>	Instruction on how the PlantSelector tool works.
<a href="#">Plant Glossary</a>	At any point you may select the "Glossary" to determine the meaning of a word.
<a href="#">Contributors</a>	Individuals and organizations that have contributed to the information in this tool.
<a href="#">About PlantSelector</a>	Program Description
<a href="#">References</a>	
<i>The Search By Plant Name is available on all pages except the Home Page.</i>	
Search By Plant Name:	If you already know the plant you want more information about
<input type="text"/>	enter the name here and click on the "Search" button.
<input type="button" value="Search"/>	

## Criteria Selected: Right Pane

<b>Criteria Selected:</b>	As you select characteristics within a category and values within a characteristic that information will be listed under the appropriate heading.
<b>Site Characteristics</b>	
<b>Trees and Shrubs</b>	
<b>Grasses and Sedges</b>	
<b>Flowers and Ferns</b>	
<b>xxx Matches</b>	The number of plant species that match criteria will be shown here.
<input type="button" value="Search"/>	
<input type="button" value="New Search"/>	
Click on "Search" to receive a list of plants that meet your criteria. Click on "New Search" to clear criteria selected.	



[Go to Top](#)

## How to limit your search

By default all of the plant categories are checked on. Therefore, plant species for all categories that meet specified criteria will be returned when a search is activated.

If you only want plant species returned from a specific category uncheck the categories not required.

Search results will include:

Trees and Shrubs

Grasses and Sedges

Flowers and Ferns